



**DOSATRON®**

*WATER POWERED DOSING TECHNOLOGY*

---

# SCHEMATICS

## Dosatron Liquid Dispenser **Model # DI520 – 7 GPM**

1:20 – 1:5

7 – 57 PSI

### **Suggested Installation:**

200 mesh/80 micron water filter prior to unit

One-way check valve downstream from unit for water hammer protection

### **Suggested Maintenance Interval:**

Replace injection seals every 12 months

---

### **DOSATRON SALES & SERVICE - NORTH & CENTRAL AMERICA**

Dosatron International, Inc.

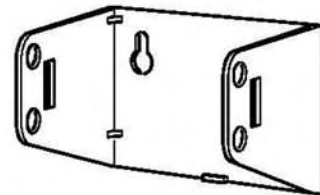
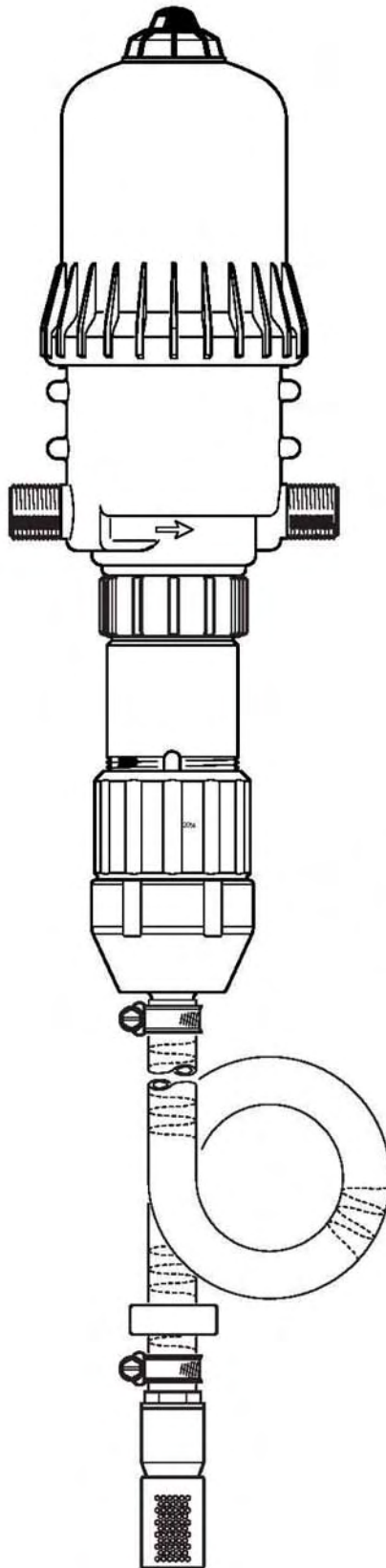
Phone: 727-443-5404 Service: (800) 523-8499

Fax: 727-447-0591

[www.dosatronUSA.com](http://www.dosatronUSA.com)

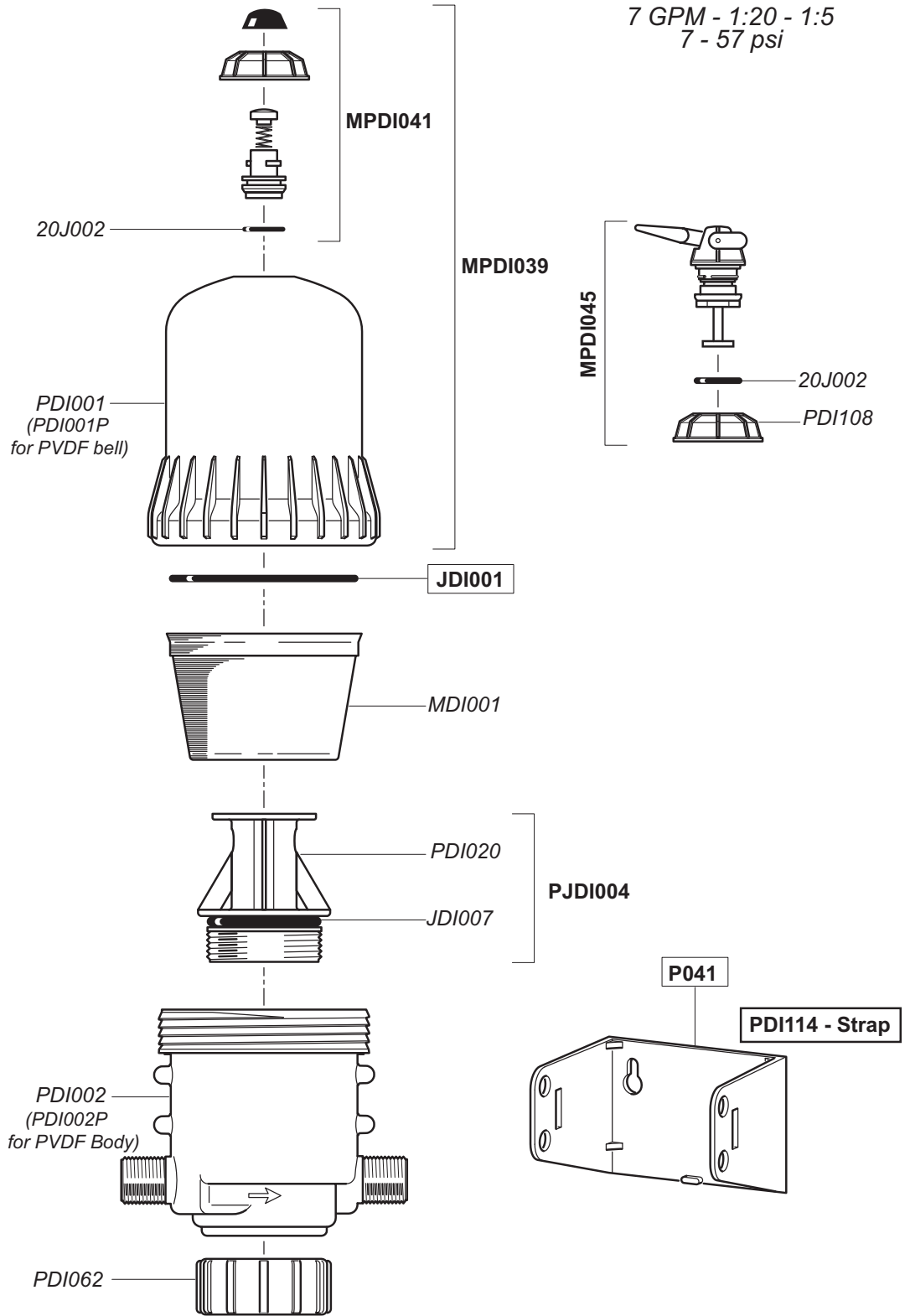
**DI520**  
11/03

7 GPM - 1:20 - 1:5  
7 - 57 psi



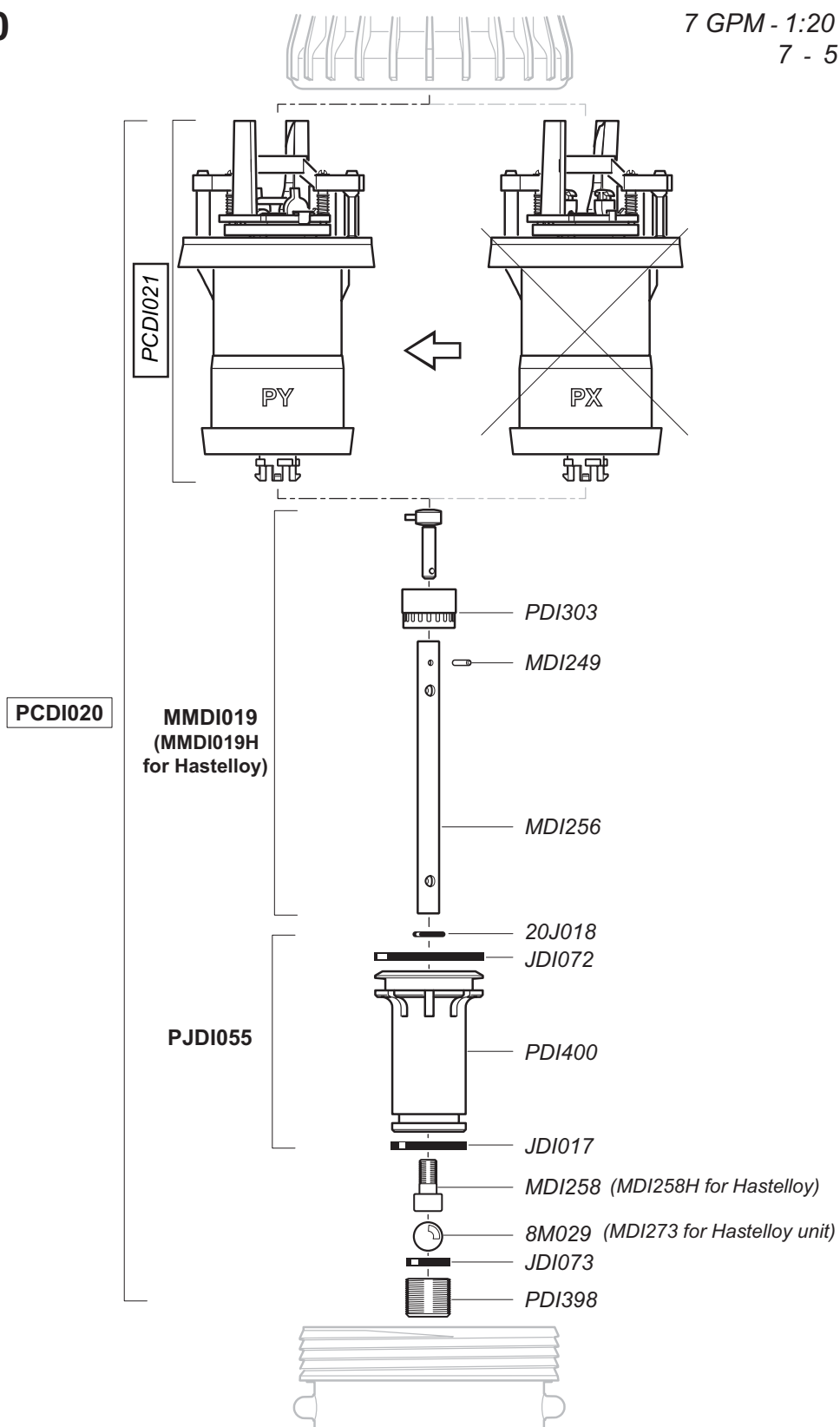
*PJD1077 - Injection Seal Kit*

**DI520**  
11/03



**DI520**  
11/03

7 GPM - 1:20 - 1:5  
7 - 57 psi

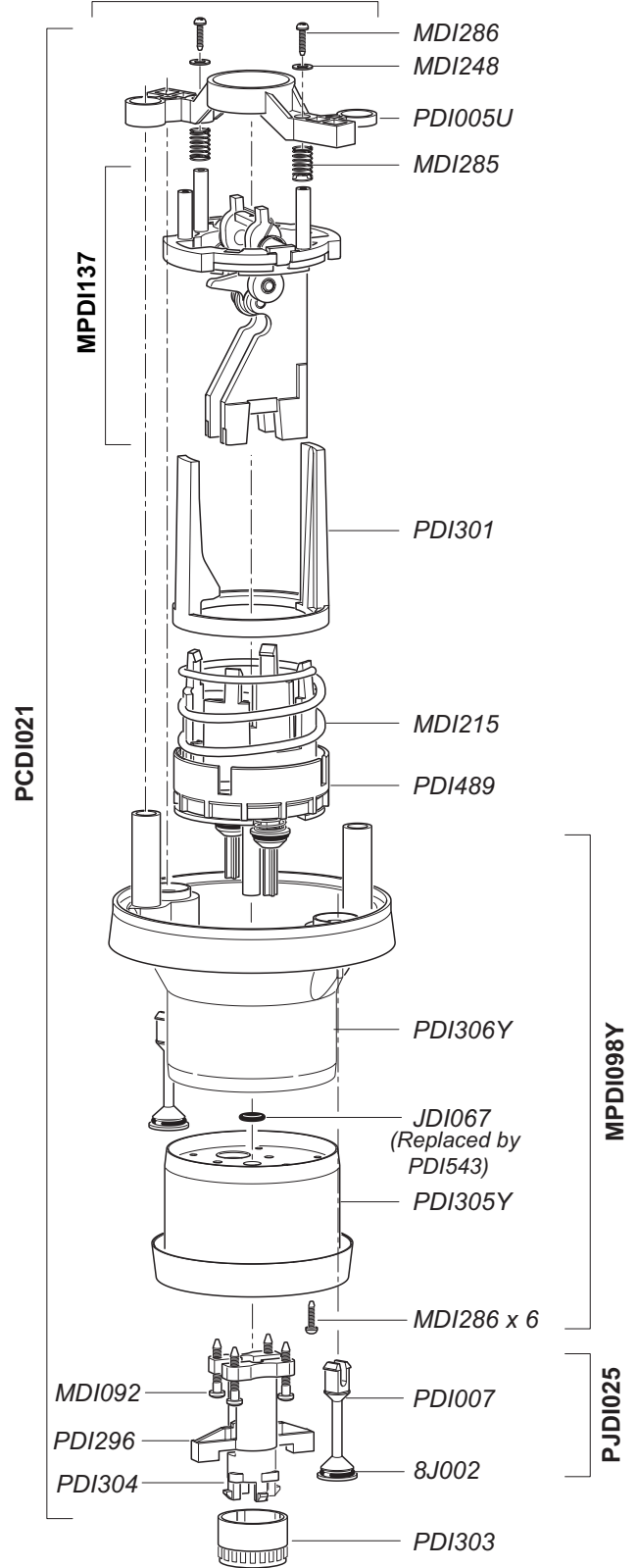
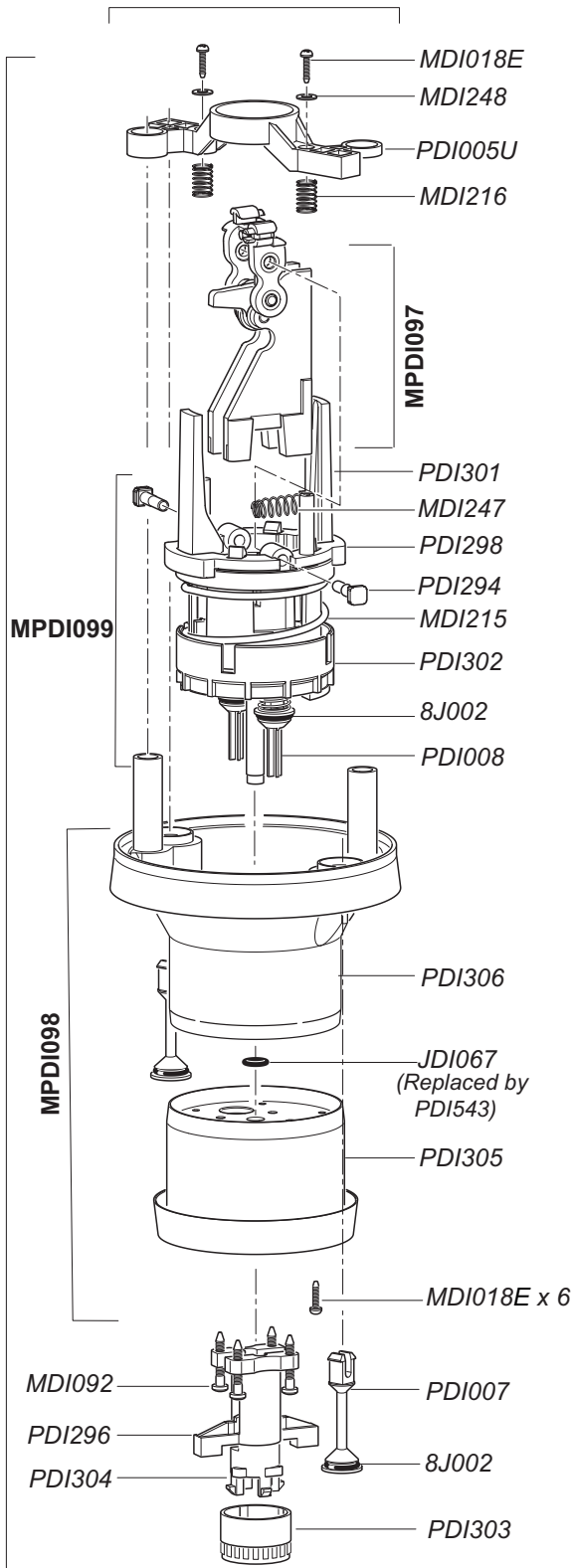


**DI520**  
11/03

7 GPM - 1:20 - 1:5  
7- 57 psi

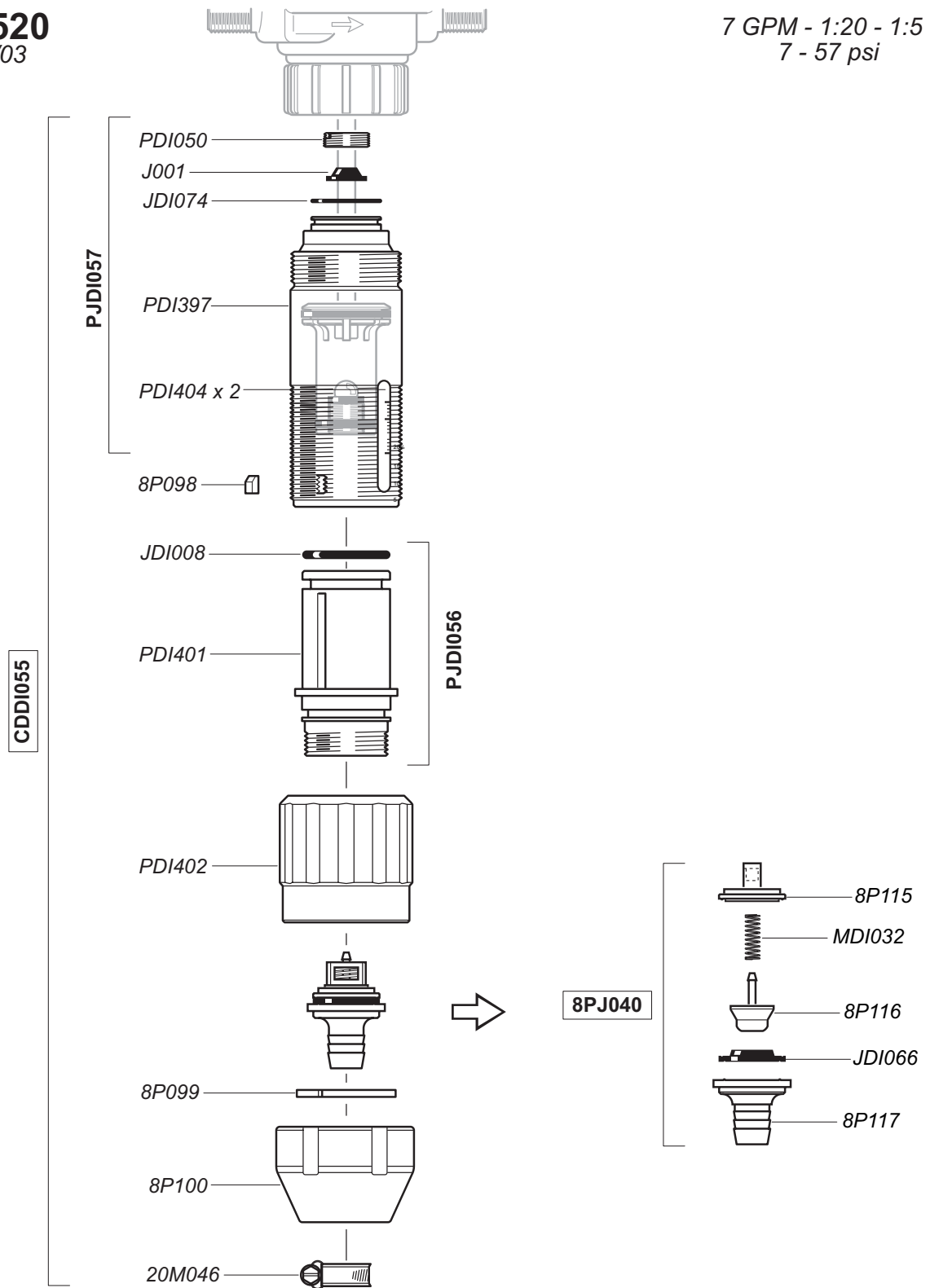
**PX**

**PY**



**DI520**  
11/03

7 GPM - 1:20 - 1:5  
7 - 57 psi



**DI520**  
11/03

7 GPM - 1:20 - 1:5  
7 - 57 psi

