



**DOSATRON®**

WATER POWERED DOSING TECHNOLOGY

---

# SCHEMATICS

Dosatron Liquid Dispenser  
**Model # D45RE8IE – 20 GPM**

1:33 – 1:13

7 – 70 PSI

1" NPT Connection

**Suggested Installation:**

200 mesh/80 micron water filter prior to unit

One-way check valve downstream from unit for water hammer protection

**Suggested Maintenance Interval:**

Replace injection seals every 12 months

**DOSATRON SALES & SERVICE - NORTH & CENTRAL AMERICA**

---

Dosatron International, Inc.

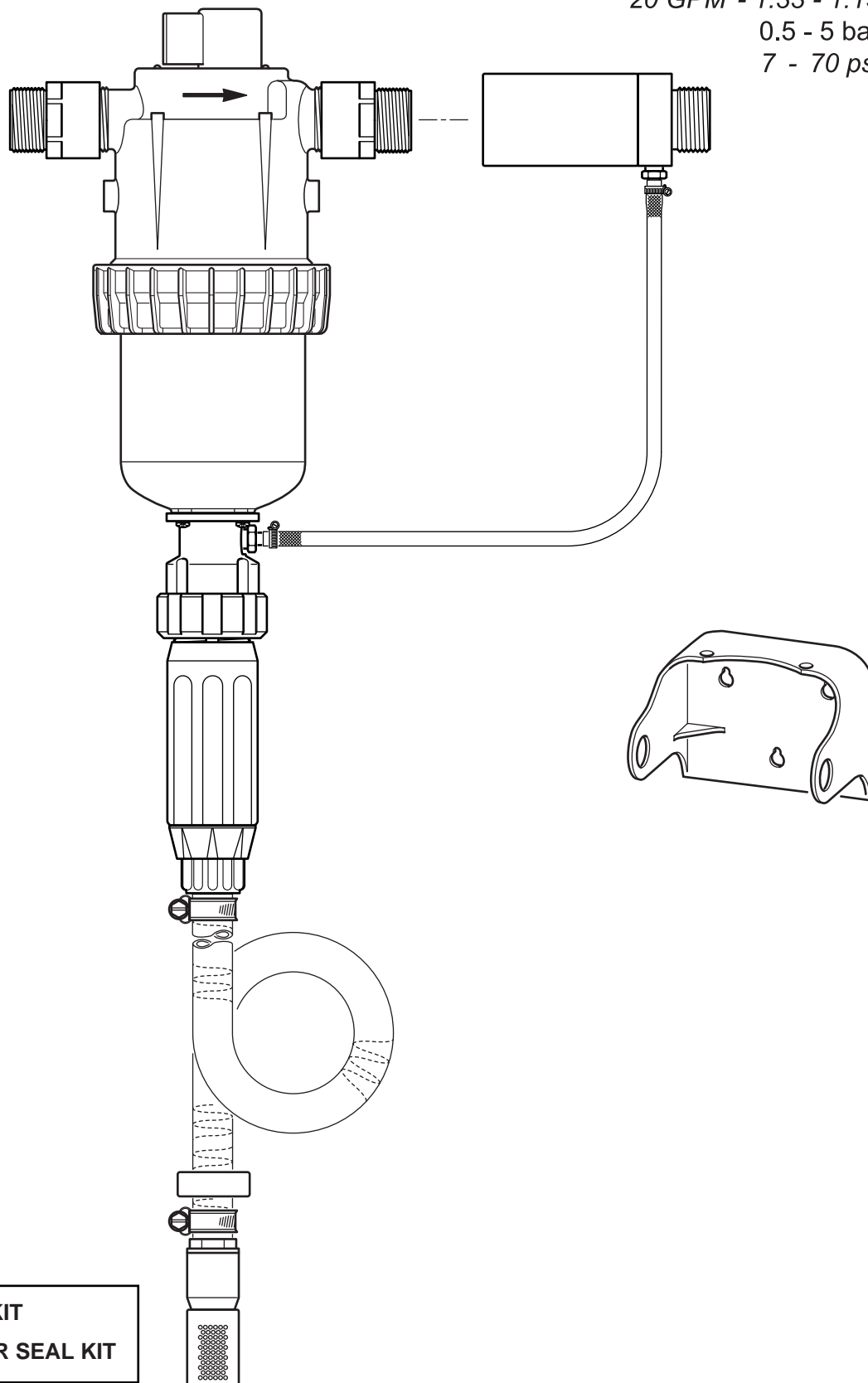
Phone: 727-443-5404 Service: (800) 523-8499

Fax: 727-447-0591

[www.dosatronUSA.com](http://www.dosatronUSA.com)

# D45RE8-IE

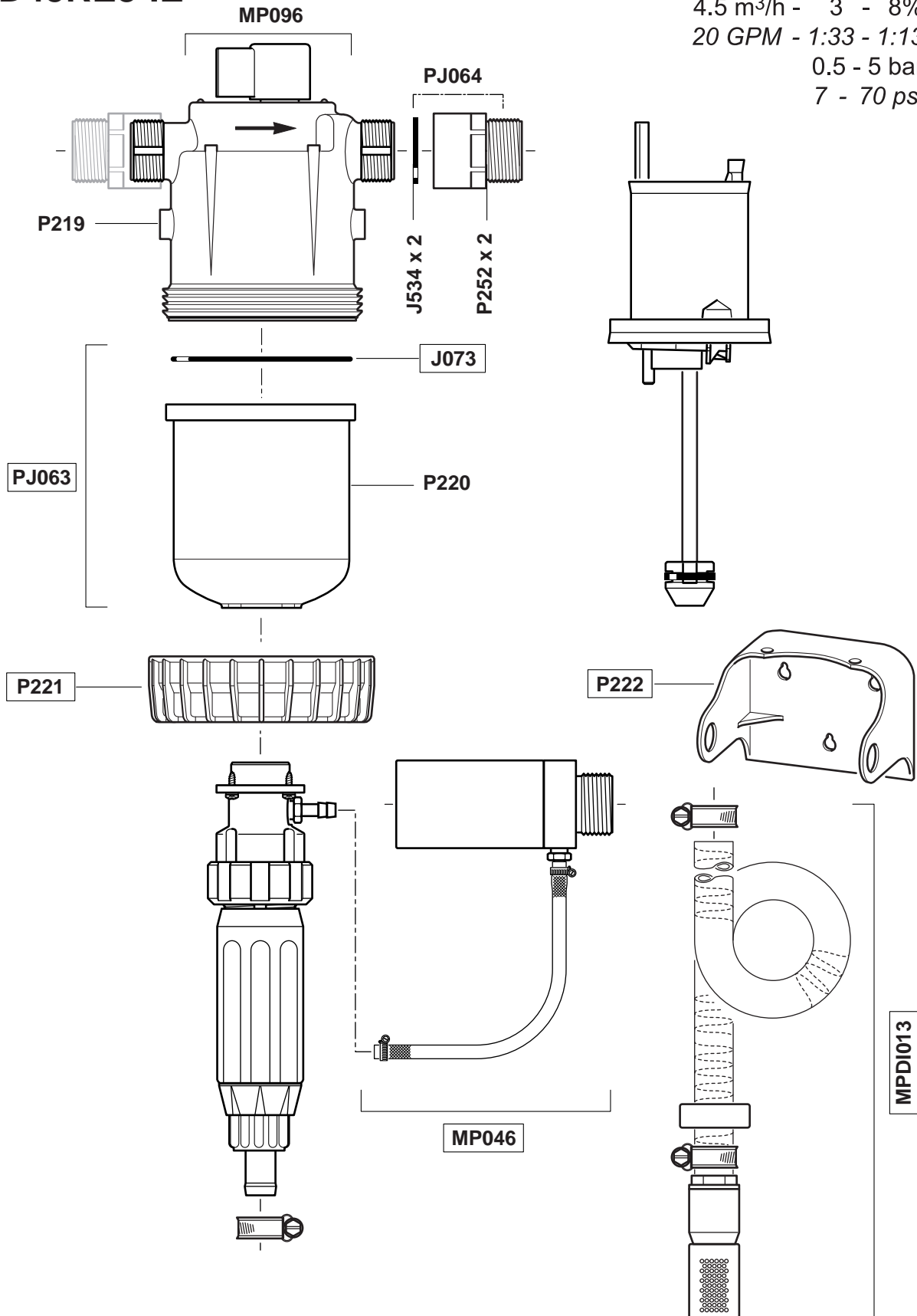
4.5 m<sup>3</sup>/h - 3 - 8%  
20 GPM - 1:33 - 1:13  
0.5 - 5 bar  
7 - 70 psi



PJ100- SEAL KIT  
EM003- MOTOR SEAL KIT

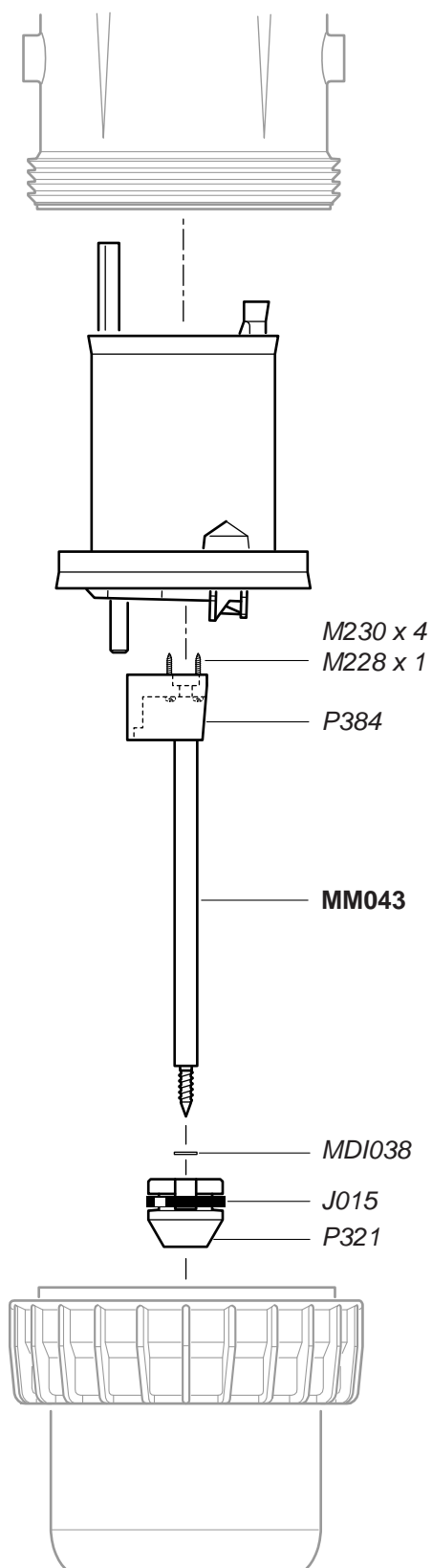
# D45RE8-IE

4.5 m<sup>3</sup>/h - 3 - 8%  
 20 GPM - 1:33 - 1:13  
 0.5 - 5 bar  
 7 - 70 psi



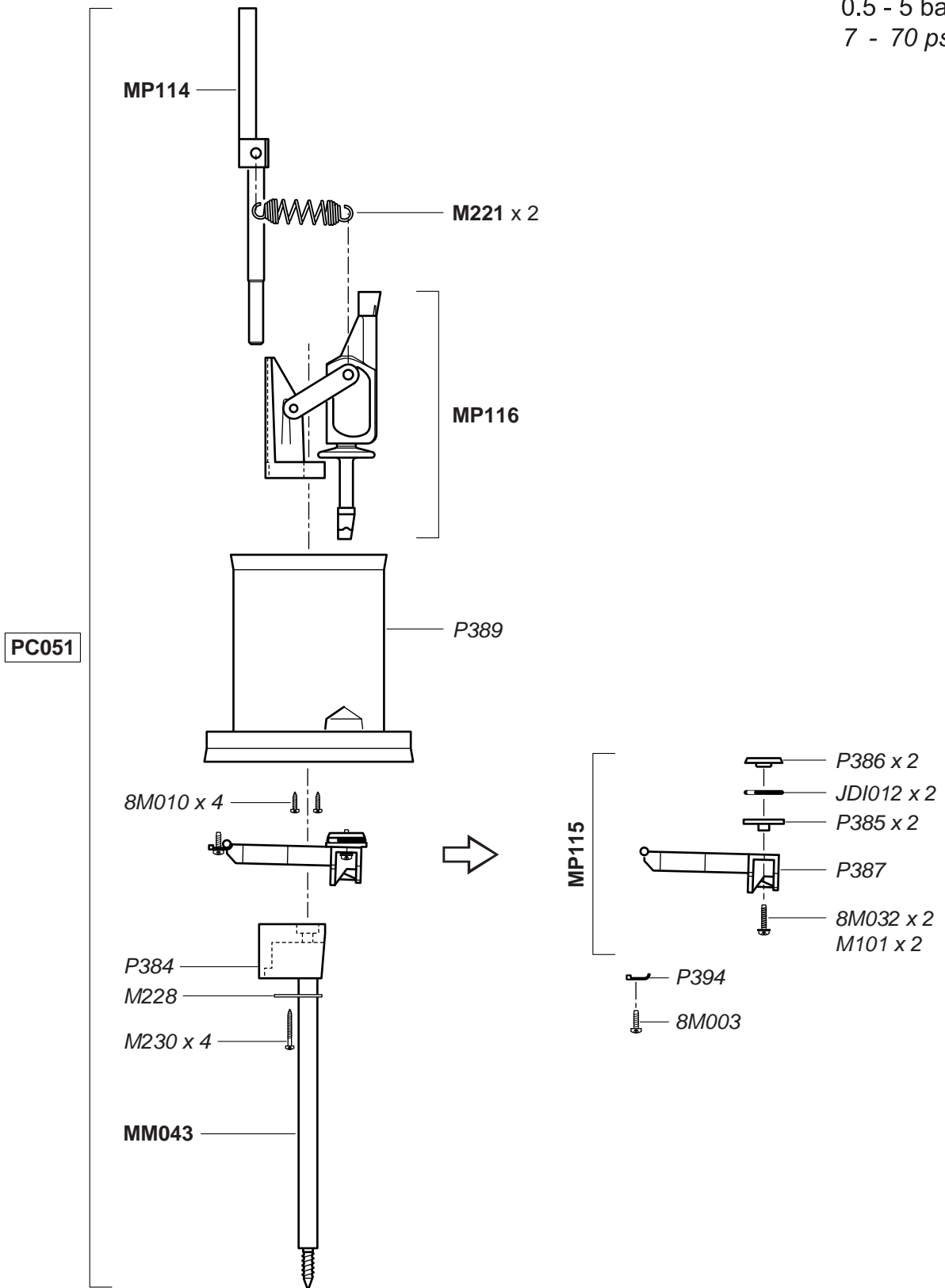
# D45RE8-IE

4.5 m<sup>3</sup>/h - 3 - 8%  
20 GPM - 1:33 - 1:13  
0.5 - 5 bar  
7 - 70 psi

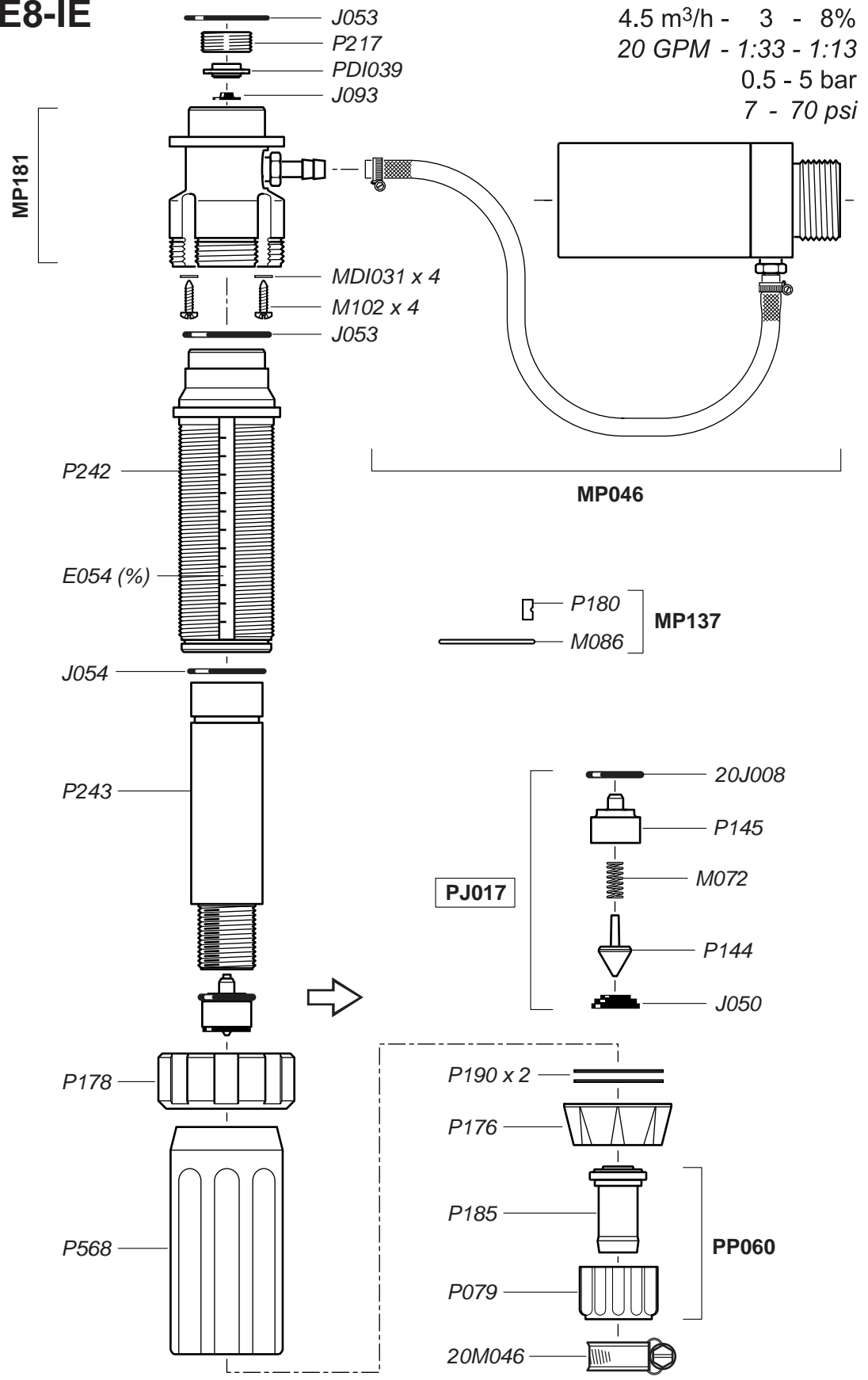


# D45RE8-IE

4.5 m<sup>3</sup>/h - 3 - 8%  
 20 GPM - 1:33 - 1:13  
 0.5 - 5 bar  
 7 - 70 psi

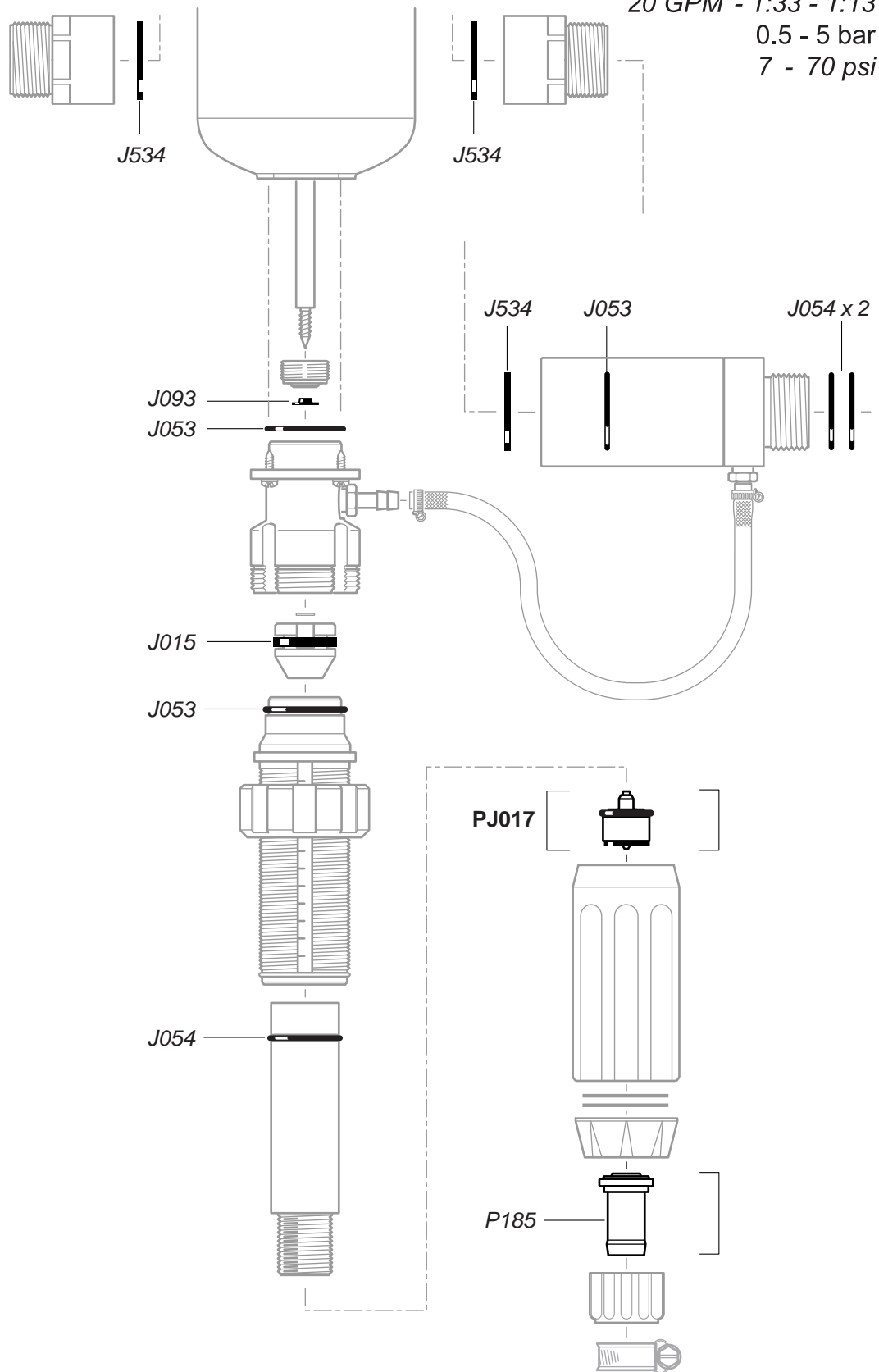


# D45RE8-IE



# D45RE8-IE

4.5 m<sup>3</sup>/h - 3 - 8%  
20 GPM - 1:33 - 1:13  
0.5 - 5 bar  
7 - 70 psi



# D45RE8-IE

4.5 m<sup>3</sup>/h - 3 - 8%  
20 GPM - 1:33 - 1:13  
0.5 - 5 bar  
7 - 70 psi

